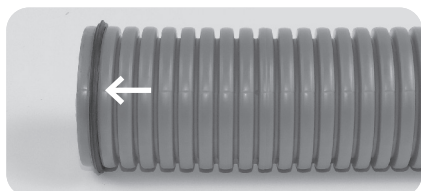
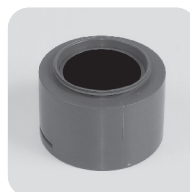
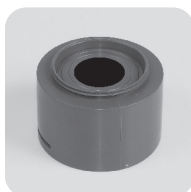
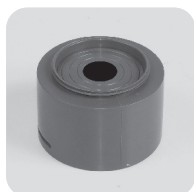
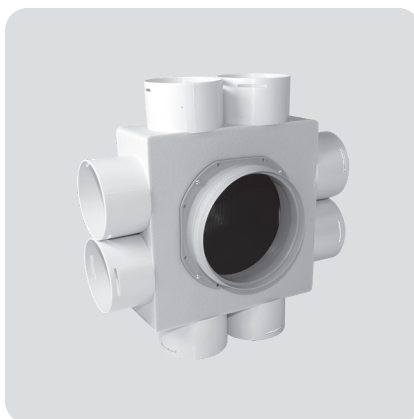


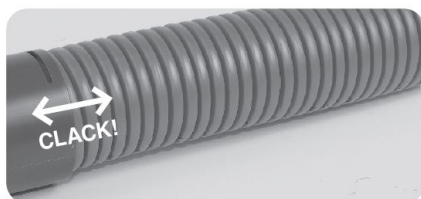
Caja compacta de distribución (8)

CAJA COMPACTA DE DISTRIBUCIÓN (8 CONEXIONES)

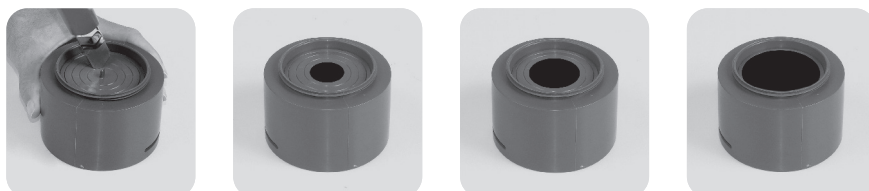
NOTA



Precaución:
junta en el primer "anillo"



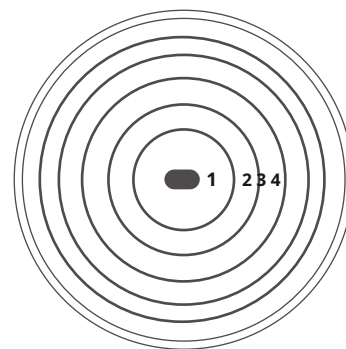
Caja compacta de distribución (8)



BOCA Ø75 - VALORES DE AJUSTE

NOTA

Sección nr.	Paso de aire (m ²)	% caudal de aire máximo
1	0,0005	16%
2	0,0011	35%
3	0,0019	61%
4	0,0031	100%



BOCA Ø90 - VALORES DE AJUSTE

NOTA

Sección nr.	Paso de aire (m ²)	% caudal de aire máximo
1	0,0005	14%
2	0,0011	31%
3	0,0019	53%
4	0,0030	83%
5	0,0036	100%

